



BOY SCOUTS OF AMERICA®  
PATRIOTS' PATH COUNCIL

## Sussex District Fall Camporee!

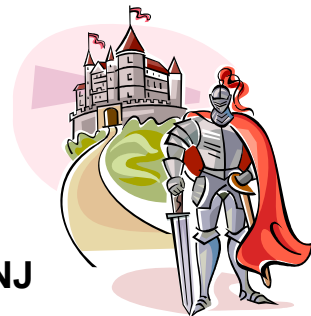
*A Chuck O'Brien memorial event*

Run by Boy Scouts for our Cub Scouts

When: October 10-12, 2014

Winnebago Scout Reservation, Rockaway Twp., NJ

### *The Knights of Winnebago*



### THE 2014 SUSSEX DISTRICT FAMILY FALL CAMPOREE

Calling all Knights of the Sussex Roundtable! Behold, our Boy Scouts will amaze our Cub Scouts with Medieval games and skills!

Dragons and Wizards abound as our Cubs venture through the King's woods.

Your pack will camp and enjoy a day of enchantment and a Saturday evening campfire provided by our Boy Scouts.

#### Camporee Schedule:

##### Friday, October 10<sup>th</sup>

6:00 to 9:00 pm Units are to check-in at the tent by the parking lot

9:30 pm ALL Cub and Boy Scout leaders and SPLs meet at the dining hall

10:00 pm Taps

##### Saturday, October 11<sup>th</sup>

7:00 am Units check-in – Camp Office - Camporee HQ

8:00 am Last minute leader questions go to HQ - cabin by parade field

8:45 am Opening Ceremony at parade field

9:00 am Activities start

12:00 to 1:00 pm – Shut down for lunch at your site.

1:00 pm Activities resume

4:00 pm Activities end

4:30 pm Dinner at your campsite or dining hall

7:30 pm Campfire at Council Point

10:00 pm Quiet time in camp

##### Sunday, October 12<sup>th</sup>

7:00 am Rise and Shine

8:45 am Closing Ceremony - at parade field

9:30 am to 11:00 am check-out – close camp

#### Meal Notes:

Saturday Dinner is available to preorder online when registering your unit and will be served at the dining hall. **Price is \$8.00 per person.** The dinner will consist of: green salad with Italian dressing; spaghetti and meat balls with sauce; garlic finger rolls, Boston Cream pie; flavored drink or water or coffee / tea





### **Registration:**

All units must register on line at the <https://www.doubleknot.com/registration/>

Registration is open now to **October 3rd** the cost will be:

- \$0 – 0 to 4 yrs.
- \$7.00 per 5 to 17 yrs.
- \$12.00 per attendees 18 yrs. and over.

### **Check-in, Rosters, and Tour Plan:**

- Friday evening = Units are to check-in at the tent by the parking lot between 6:00 pm to 9:00 pm.
- Saturday morning = begin to arrive at 7:00 am to 8:00 am, check in at Camporee HQ by the parade field
- To check in, each unit should submit 2 copies of their roster (1 for us and 1 for the campmaster).
- Cub packs, make sure 1 person in your unit that will be attending has BALOO training

### **Marking and Manning of Stations:**

Boy Scout troops will be asked to man each activity. The camporee locations will be well marked with signage to ensure that our Scouts can find the different events. Our programs and contests will be listed in our leader's addendum.

**Please note:** At the conclusion of the station event, please turn in any district equipment to the Camporee HQ building. Be sure to remove any materials, station markings, boundaries, trash, etc. from your station before departure HQ.

### **Camping:**

- We will be camping on the north side of Winnebago Scout Reservation.
- **Your unit MUST check in at the tent in the parking lot Friday and Camporee HQ – Parade Field -Saturday- before setting up camp.**
- Each camping area will be managed by the camporee staff.
- The unit should properly mark their site with their unit's flag.
- Follow the "Leave No Trace" Philosophy while camping.
- Respect other units around you.
- Water is available at the shower house and may be available at your site.
- All cooking should be done using above ground stoves or in the campfire ring.
- **Be sure to have in public view a first aid kit and fire extinguisher in your site.**
- Scouts and Scouters should show respect in using latrines. Please do not throw trash in the latrines.
- Always be prepared to share a campsite if need be.
- **All Cub packs must have a leader who has completed BALOO training.**
- ONLY ONE equipment trailer or vehicle will be allowed to park at the campsite for each unit. See following parking rules.
- **Site inspections – check out**
  - **All sites will be inspected** before your unit checks out and before you receive your unit ribbon and your unit's patches.





- For your site to be inspected please call 973-459-1384
- Once you have been inspected, you will be given the okay for check out.
- **Build campfires in established fire pits**
  - Appoint a pack fire marshal
  - Never leave your campfire unattended
  - Bring water and a shovel for throwing dirt on a fire if it gets out of control
  - Drown the fire with water at lights out
  - Make sure all embers, coals and sticks are wet
  - Stir the remains, add more water and stir again
  - Be sure all burned material has been extinguished and cooled before your fire marshal goes to sleep

### **Grey Water – Trash**

- **Garbage must be put in the dumpster by the Dining Hall and not left in your camping area (especially overnight). Be sure to LEAVE NO TRACE.**
- **All “grey water” will be disposed of properly.** You should dump your strained gray water away from your site **but not down a flush toilet.**

### **Meals**

- **All units will be responsible for their own meals for this event.**
- **Saturday dinner is available at a separate price.**
- Be sure to clean up – put food away after your meal is complete.

### **Ceremonies and Religious Service**

- We will be conducting a short Scouts Own Service at Saturday night campfire program.
- Scout uniforms should be worn for the opening ceremony, closing ceremony, campfire, and Scouts Own Service.

### **Health, Safety, and Identification:**

- Cub units will help in maintaining the bathrooms at the shower house.
- Follow the buddy system!
- Be sure to follow the Guide to Safe Scouting to make sure all health regulations are followed.
- Campsites will be inspected.
- Flush toilets at the shower house will be made available. Please help keep them clean.
- **IMPORTANT – ONLY EMTS WILL CALL 911! Call Karl Grogard @ 973-459-1384 for assistance.**
- All injuries should be reported to staff. Cubmasters are to fill out incident reports and submit them to the council office.
- **The closest hospital** to Winnebago Scout Reservation is **Saint Clare's Hospital/Denville**  
25 Pocono Road, Denville, or **Chilton Medical Center**, 97 West Parkway, Pompton Plains, NJ





- **In case of inclement weather, please follow the direction of the staff.** A siren will sound. Example: Lighting storms – units should seek protection in buildings, dining hall, or under pavilions.
- **Lost Scouts!** Upon notification of a lost Scout, an alert will be sent to all staff members.
- **Lost and found** will be at the Camporee Headquarters.- Cabin 4
- We will follow the Guide to Safe Scouting:  
<http://www.scouting.org/HealthandSafety/GSS/toc.aspx>
- LEADERS ONLY - Please have your cell phones fully charged, on, and with you at all times so that we can contact you if needed during the event.
- **IF YOU HAVE ANY ISSUES during the camporee, please contact Karl Grogard at 973-459-1384**
- Site campfires – please follow the BSA policy. Each unit needs to bring at least 1 pail to be filled with water and a shovel for your site's campfire.
- **Be sure to have in public view a first aid kit and fire extinguisher in your site.**
- **DON'T FORGET THAT THIS IS BEAR COUNTRY! Store your food (not in your tents)**
- Please remember that wildlife wanders in the camp. No one should keep food, toothpaste, or anything else that may attract an animal in their tent or at the site. These items should remain locked in your site vehicle or trailer

### **Awards:**

All units will receive a spring camporee participation ribbon and each Scout will receive a patch. There may also be other awards presented.

### **Parking:**

- Cub leaders will be helping with parking on Saturday.
- For those camping over the weekend - Scout units will be parking at the main parking lot. For day visitors, you will park at designated areas.
- The vehicle must arrive before 7:00 am to 8:00 am on Saturday morning or it will not be permitted to go to the site. **There are no exceptions.**
- Your vehicle will remain at the site until after all Scouts have left on Sunday, about 11:30am
- Each vehicle will post the owners contact information on the dash. Please follow all parking rules.
- Due to limited parking availability, **carpooling is imperative.** Please limit the number of vehicles parking at the event as much as possible.
- All cars must have a parking permit with all information completed.
- If there is a need there will be a handicap parking area by the staff showers in the parking lot. Please let us know ahead of time.
- **Trailers & vehicles**
  - ONLY 1 vehicle per unit may park at their campsite. If there is no room due to your unit sharing the site with another unit, please work with the other unit(s) at your site. DON'T block the camp road.





- All vehicles/ trailers must be in camp and parked in site no later than 8:00 am Saturday morning. No exceptions!
- **Camp Road**
  - The gate to the camp area road will be open from 1:00 pm Friday till 6:00 pm Friday night.
  - The gate will again be opened Saturday from 7:00 am to 8:00 am.
  - THE CAMP ROAD MUST BE OPEN AT ALL TIMES for emergencies!

**Unit Permission Slips:**

To properly advertise this camporee and all future events, we are asking that each unit have the following information put on their permission slips:

**Equipment list:**

- Please remember that this is only a weekend event. What you bring is what you will have to carry in to your site.
- ONLY 1 vehicle will be able to drive into their site to drop off gear and stay at the site for the remainder of the event and will not move until given the “all clear” after the unit check out.

• **What to bring for each camper:**

Camp Chair	Pillow	Socks & Undergarments
Rain Coat or Poncho	Flashlight	No Open Toe Shoes
Camera	Water Bottle	Sweatshirt or Coat
Any Medications you may need	A Cart or Wagon to move your stuff	Gloves and Hat
Tent	Scout Shirt - Class A & B	Toothbrush & Paste
Mallet for Tent Spikes	Long Pants	Comb or Brush
Sleeping Bag	Extra Shirt	Hand Sanitizer
Insect Repellent containing DEET	First Aid kit	Towel & Soap for washing

• **What each Unit should bring:**

Food for meals		Pack First Aid Kit
Propane Stove	Cooking utensils	Water jug(s)
3 pans for washing dishes	Fire extinguisher	Pack and U.S. Flags
Small shovel for campfire	Small bucket for campfire	Low suds dish soap
Foil	Matches	Cooler to store items
¼ inch rope	Trash bags	Scouring pads
Coffee pot	Pots and pans	

• **What not to bring:**

- No Smoking ANYWHERE in camp where Scouts can see you.
- No Alcoholic Beverages of any type.
- No Dogs or Animals of any type except for service animals.
- No Firearms, Sheath Knives or Fireworks.
- No Liquid Fuel.
- No Video Game players or electronic tablets of any type.





**Scoring:**

No scoring. This is a fun event.

**Saturday Program:**

Will be noted in the leader addendum.

**Rules:** The Scout Law, Promise, and Oath are the rules that we follow.

**Please contact Karl Groggaard at [kgroggaard@gmail.com](mailto:kgroggaard@gmail.com) for additional information or with any questions.**

**HANDICAPPED ACCESSIBILITY STATEMENT**

In compliance with the Americans with Disabilities Act, the Patriots' Path Council, Boy Scouts of America will make all reasonable efforts to accommodate persons with disabilities at its meetings. Please call Mark Spaldo at 973-765-9322 with your request.

**PHOTO RELEASE**

I understand that by attending this program, sponsored by the Patriots' Path Council, Boy Scouts of America, I consent to the use of photographs, film, videotapes, electronic representations and/or sound recordings made of me during that time by the Boy Scouts of America, at their discretion, and I hereby release the Boy Scouts of America from any and all liability from such use and publication.

**RULES FOR ACCEPTANCE AND PARTICIPATION IN THE PROGRAMS**

Rules for acceptance and participation in the programs are the same for everyone without regard to race, color, national origin, or handicap.

**TAX DEDUCTIBLE PORTION**

All amounts in excess of \$0.00 per ticket may be claimed as tax deductible.

**CANCELLATION POLICY**

In all programs offered by the Patriots' Path Council, BSA, a great deal of planning and purchasing takes place well in advance. These plans include, but are not limited to, staff, food, program materials, patches and awards, rental and purchase of equipment, and in some cases, items of clothing such as T-shirts that are given as part of a program fee.

When an individual or group makes a reservation for an activity or program, these items are included in ordering of materials and staffing for that event.

**Refunds:** Individuals or groups that cancel a program reservation 30 days prior to the date of the event will receive a refund of fees paid, less a 15% administrative charge. No refunds will be made after the 30 day cancellation deadline, unless there is a medical or other emergency.

ALL CANCELLATIONS MUST BE MADE IN WRITING AND SENT TO THE PATRIOTS' PATH COUNCIL, 1 Saddle Road, Cedar Knolls, and NJ 07932

*Please remember, there will be a lot of Scouts, Scouters, and families participating in this event. We ask that you please be patient and help us by following the above guidelines and rules.*

