

White Mountain Wilderness Trails



The area in which these hikes are located is rugged high mountain country along the Mogollon Rim. This famous east-west escarpment separates Arizona's high plateau from the basin and range below. These eastern Arizona hikes are all located between the eastern boundary of Apache land (Fort Apache and San Carlos Reservations) and State Highway 666, the Coronado Trail. This beautiful green area boasts the state's highest rainfall and provides three seasons of hiking. In the winter it gets downright cold. The record low for the state was recorded at nearby Hawley Lake at -40 degrees F. Regardless of season, ***contact the U. S. Forest service before taking any of these hikes and heed their advice.***

The USGS Topos covering each hike are given with the description; but none of these contain the trail numbers assigned by the Forest Service. You will need the USFS Apache-Sitgreaves National Forests Map available at all ranger stations as well as at hiking shops and map stores.

MOUNT BALDY: Starting at Greer, Arizona, hike either Trail #94 or #95 to the top of Mount Baldy and return by the other trail. Mount Baldy on the eastern boundary of the Ft. Apache Reservation is the highest point in eastern Arizona and affords a vast view in all directions. This is best done as an overnight hike. The summit is on the Fort Apache Indian reservation and is not accessible. The area is closed by the White Mountain Apache tribe. Elevations range from 8560 feet at Greer to 11403 feet at the summit. The hike to the summit and back is 25 miles. (Topos: Mount Ord and Big Lake [15'J Quads. Also see USFS Mount Baldy Wilderness Visitor's Travel Guide and Map.)

For off-reservation information contact:

Springerville Ranger District
Springerville, AZ 85938
Telephone (928) 333-4372

SQUIRREL CANYON: Hike this loop down off the rim and through a couple of rugged canyons to Honeymoon Campground. You may hike it either direction but we recommend making it an overnigher with camping at Honeymoon. Backpack it or have your gear brought to the campground by a support vehicle. Drive 4.2 miles west on Forest Road 54, take Trail #34 southwest through Squirrel Canyon to # 45 and turn south to the campground. Return the next day back up #45 to #48 through Warren Canyon to pick up #34 back to the road. The loop is about 20 miles with elevation changes between 8800 feet and 5800 feet: (Topo: Hannagan Meadow [15'] Quad)

Contact:

Clifton Ranger District
Apache National Forest
P.O. Box 698
Clifton, AZ 85533
Telephone (928) 865-4129

EAST EAGLE CREEK: This rugged two day hike sometimes following pretty Eagle Creek can be hiked in either direction and gear may be brought to camp by vehicle if desired. Start from Strayhorse Campground located 0.2 miles in on Forest Road 504 off State Highway 666. Hike south on Forest Road 587 to Burnt Corral on East Eagle Creek, then take Trail #33 downstream to the junction with Trail #45. Follow #45 south to Honeymoon Campground and make camp for the night. The next day take Trails #45, #27, #91, and #15 easterly to Rose Peak and Highway 666. Contact is again Clifton Ranger Station. This hike is 22 miles long and covers elevations of 7200' to 5340'. (Topos: Hannagan Meadow [15'] and Robinson Mesa Quads)

ROSE SPRING: One leg of the route takes you along the top of the rim with the return leg beneath the rim, providing vivid contrasts in altitude and terrain. This two day backpacking trip can be hiked in either direction. Drive to the end of Forest Road 54 west of State 666. Take Trail #54 west along the rim to #45 on which you head north 1/2 mile to Rose Spring. Return the following day to State 666. Again, contact Clifton Ranger Station. This 24 mile hike ranges in elevation from 8800' to 6700'. (Topo: Hannagan Meadow [15'] Quad)

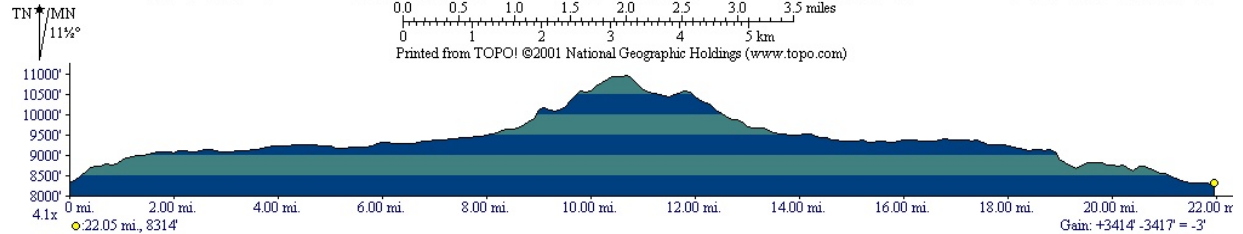
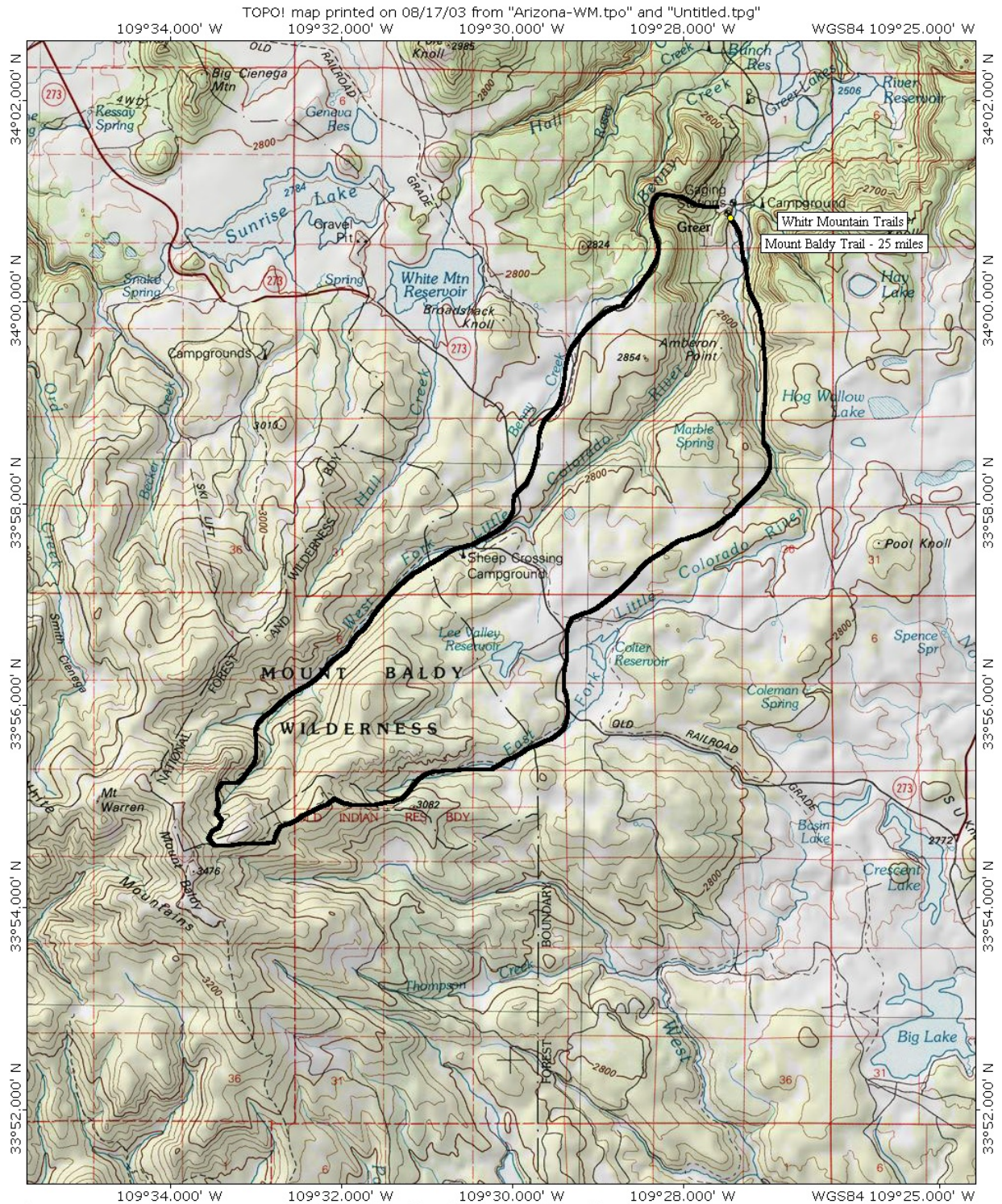
BEAR CANYONS: Imagine, two Bear Canyons in the same hike! Take Forest Road 54 west from State 666 for 2.5 miles to Trail #26 and down Bear Canyon to Chitty Canyon and #37. Continue downstream to #18 and on to East Eagle Creek, up Hot Air Canyon via #15, west on #27 and south on #19 to #46, the Bear Canyon Trail. Descend down another Bear Canyon via #46 to Forest Road 217. Contact Clifton Ranger Station. Hike covers 26 miles with elevations between 8800' and 4850'. (Topos: Hannagan Meadow [15'], Robinson Mesa, and Bee Canyon Quads)

Mount Baldy, Squirrel Canyon, East Eagle Creek, Rose Spring, Bear Canyons Segments

1. The hikes in this area are located in rugged high-mountain country around the Mogollon Rim, Arizona's famed east-west escarpment which separates the state's high northern environs from the remainder of the state's lower desert areas.
2. The hikes are all found in the vicinity of the Rim in eastern Arizona, between the eastern boundary of Fort Apache and San Carlos Indian Reservation and State Highway 666.
3. The area is Arizona's most verdant and well-watered.
4. It is a three-season hiking area, spring through fall; winter snow storms can quickly make travel hazardous.
5. **You must contact the U.S. Forest Service before taking any of these hikes and follow their instructions.** The Mount Baldy Trail is the only well maintained trail.

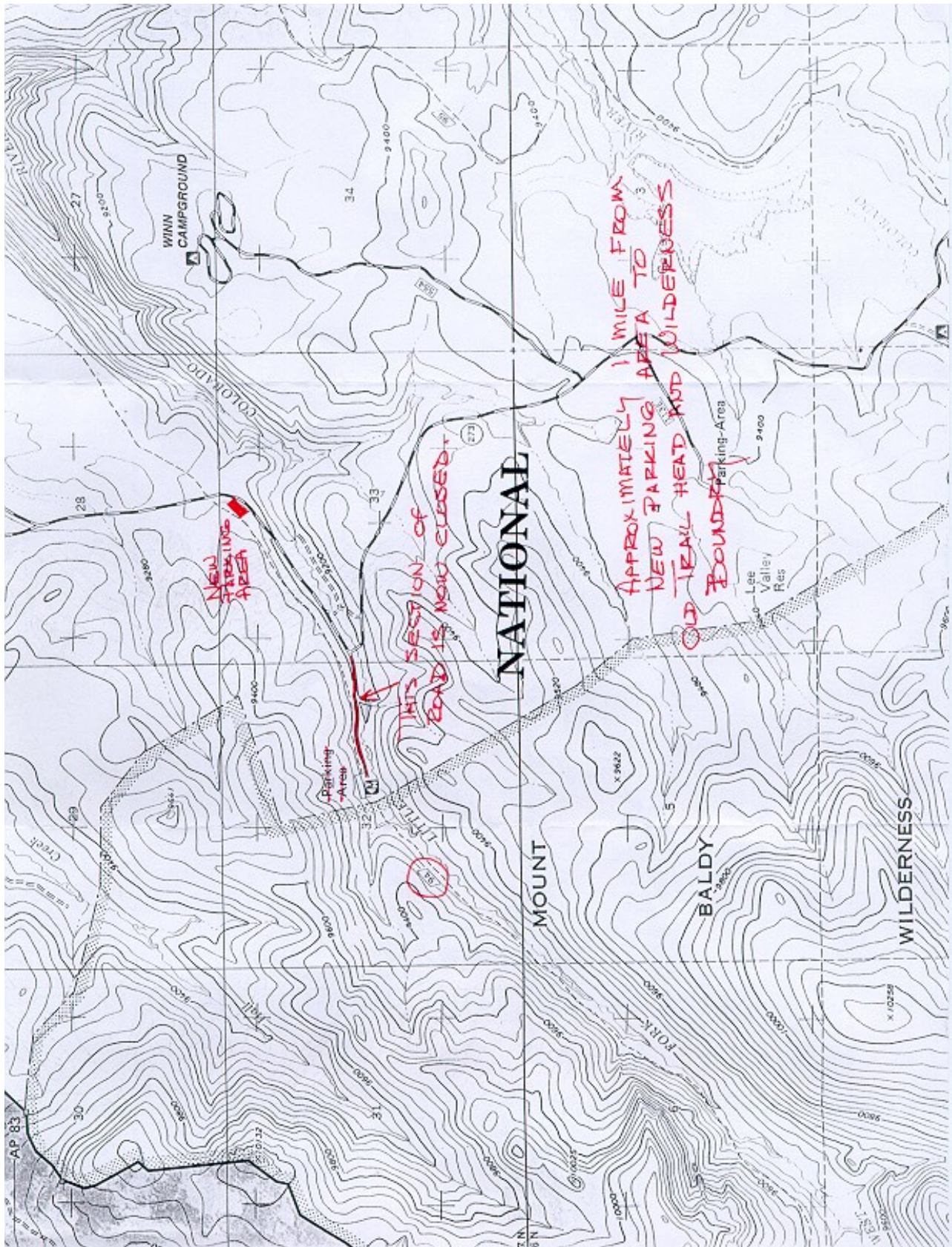
Note: USGS maps do not have trails numbers. You will need USFS Apache-Sitgreaves National Forest Map, obtained at Forest Service Ranger Stations. This map covers all the hikes in this series.

White Mountain Wilderness Trails

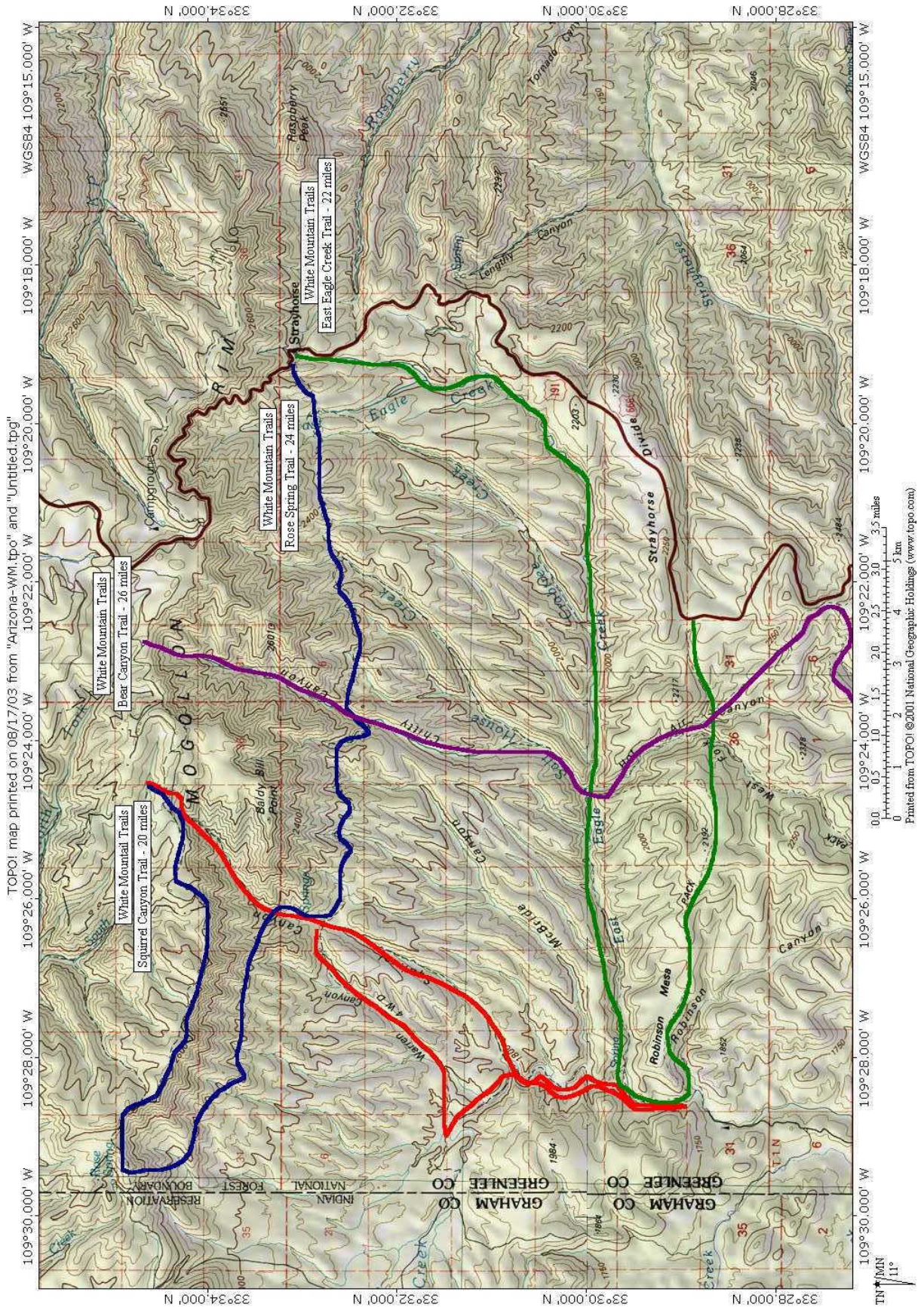


White Mountain Wilderness Trails

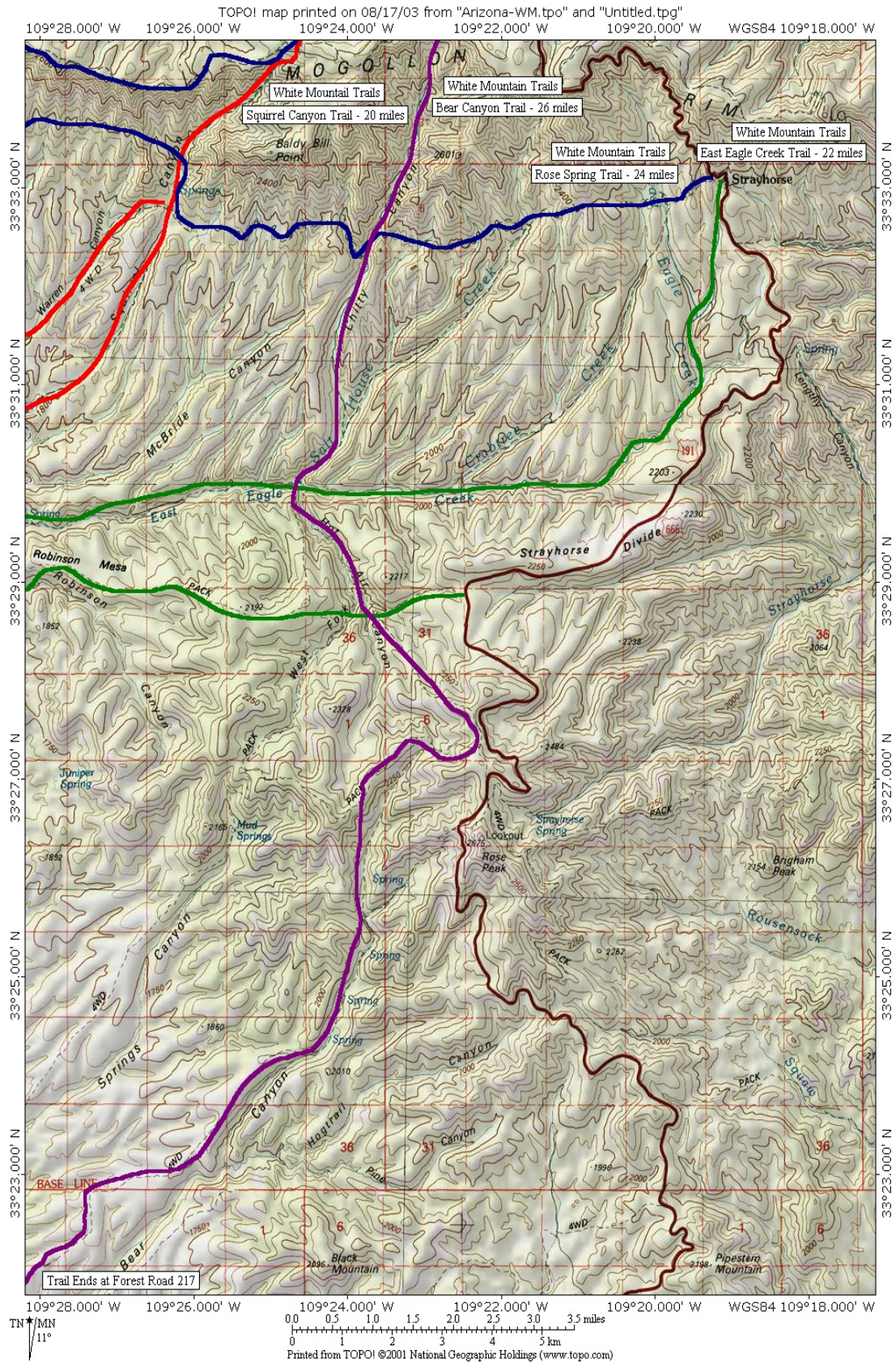
Revised parking and trailhead location for Mt Baldy Trail White Mountain Wilderness Trails



White Mountain Wilderness Trails

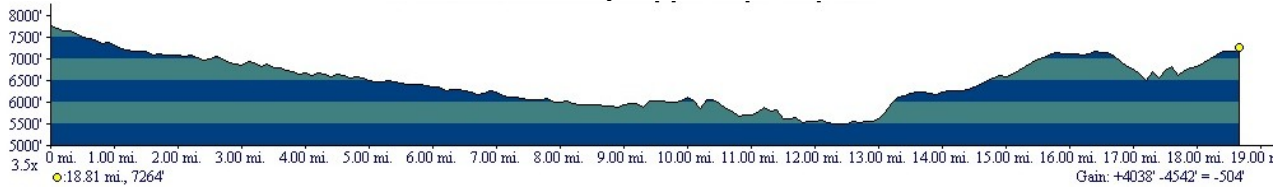


White Mountain Wilderness Trails

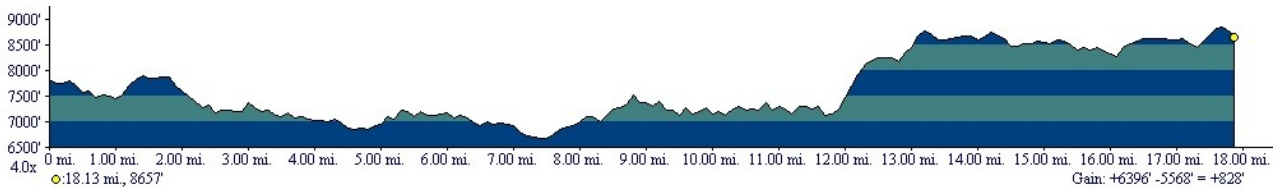
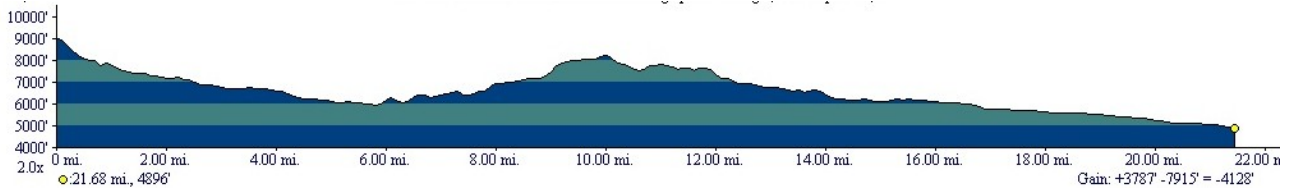


White Mountain Wilderness Trails

Bear Canyon Trail – 26 miles



East Eagle Creek Trail – 22 miles
Rose Spring Trail – 24 miles
Squirrel Canyon Trail – 20 miles



These profiles are approximate, but they give an idea of the terrain of these trails.